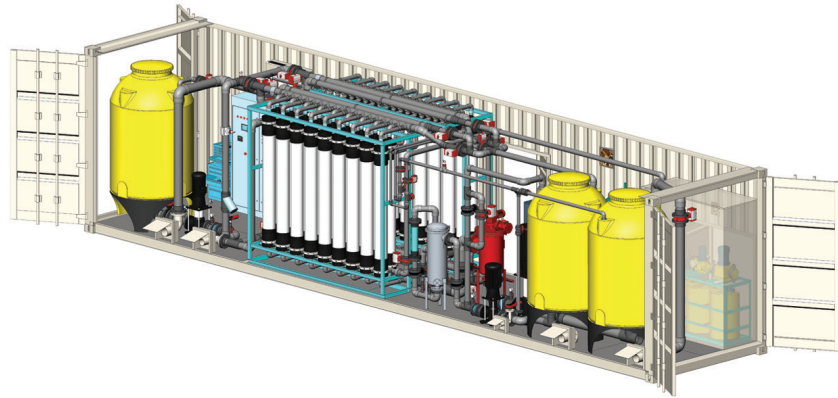


Scinor Mobile Water Treatment Systems

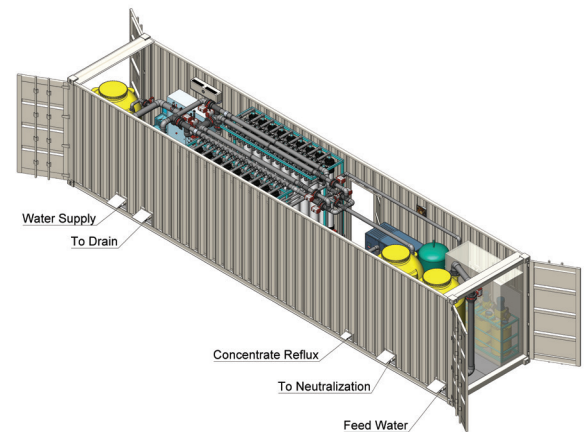
When municipal and industrial water providers require a fast, cost-effective solution to supplement their supply, Scinor has the solution.

Our flexible mobile water treatment systems are designed to supplement or replace your system in an emergency situation such as equipment failure, or to meet seasonal demand or relieve drought, or continue meeting customer needs during planned system upgrades.

Outfitted with Scinor's TIPs ultrafiltration modules, these systems provide state of the art treatment for any water source – surface waters, groundwater, wastewater for recycle and for desalination of brackish or salty waters.



Scinor Mobile Water Treatment System interior (above) and exterior (below). Individual units can produce up to 1/2 MGD.



Container connections (above)

Applications

Drought Relief

- Tap into unused sources during dry periods to meet demand.

Emergency Response

- Replace treatment processes damaged during disaster events.

Seasonal Needs

- Meet seasonal demands without investing in additional facilities.

Planned Plant Shutdown

- Provide alternate treatment while upgrading existing processes or building a new facility.

Permanent Installations

- Acquire state of the art treatment process in a self-contained system.

Scinor Water America, LLC

40 Wall Street, 28th Floor
New York, NY 10005
800.774.1385

Please visit scinor.com for further information.



Specifications

Parameters

Scinor Mobile Water Treatment Unit	Water Production	0.5 MGD (1.9 MLD)
	Container Size	40 Feet
	Number of Modules	36
	Membrane Area	27,900 ft ² (2,592 m ²)
	Design Recovery Rate	91-95%
Connections	Raw Water Inlet	6" ANSI Flange
	Backwash Waste	6" ANSI Flange
	Filtrate	6" ANSI Flange
	CIP Waste	2" ANSI Flange
	Power	460V/30AMP/3 Phase
Operating Parameters	Temperature	33 - 104 °F (1-40 °C)
	Operating pH Range	1-11
	Max NaOCl for Cleaning	5000 mg/L
	Backwash Flux	30-70 gfd (50-120 l/mh)
	Air Scour Flow	3.1 – 7.5 scfm/module (5-12 Nm ³ /hr/module)
	Max. Feed Pressure	60 psi (4 Bar)
	Max. TMP	45 psi (3 Bar)
	Operating TMP	3-30 psi (0.2 – 2 Bar)
	Max. Air Scour Pressure	36 psi (0.25 MPa)
	Max. Backwash Pressure	36 psi (0.25 MPa)
Filtered Water Performance	Turbidity	≤0.1 ntu
	Silt Density Index	≤3
	E.Coli Removal	non-detect



Drinking Water



Wastewater



Desalination



Industrial



The information provided in this brochure contains general descriptions to illustrate product characteristics and parameters. Conditions and protocol may differ from one location to another and may change with time. Customer is responsible for determining whether products and the information in this document are appropriate for customer's use. Scinor assumes no obligation or liability for the information provided in this document.