



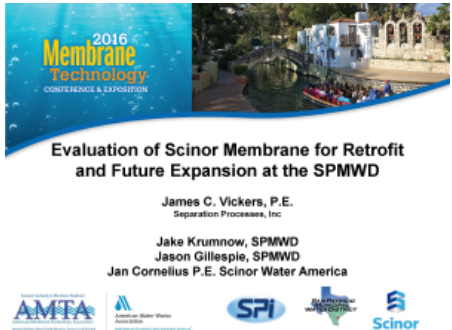
760-400-3660 info@spi-engineering.com

Home Company Services Markets Project Files News and Publications Careers

# Evaluation of Scinor Membrane for Retrofit and Future Expansion at SPMWD

Home / Publications /

Evaluation of Scinor Membrane for Retrofit and Future Expansion at SPMWD



The San Patricio Municipal Water District (SPMWD or District) has operated its Plant C facility for the production of filtered water for industrial and municipal consumers. The feed water is a blend of two sources: 1) the Nueces River and 2) Lake Texana. Water from these sources is combined at the Naismith reservoir before entering the "potable" treatment facilities at Plant A (conventional) and Plant C (membrane). The Plant C treatment system consists of coagulation, flocculation, sedimentation, and MF filtration using a Pall membrane system.

You can read the entire paper [here](#)

You can see the entire presentation [here](#)

SPI - The Membrane Technology Consultants  
 3152 Lionshead Ave., Carlsbad, CA 92010 | Tel (760) 400-3660 | Fax (760) 400-3661

Privacy Policy Site Map Contact SPI

© 2019 SPI. All Rights Reserved.  
 Designed by Vantage Internet Services